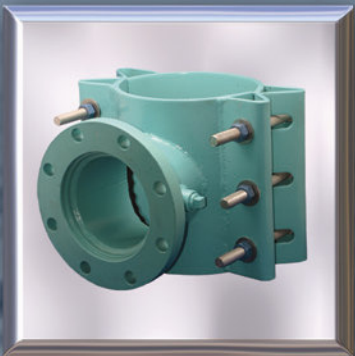
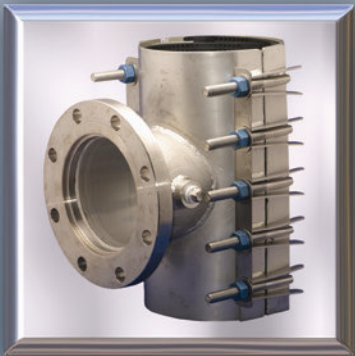


# WATERWORKS DIVISION



**Cast and fabricated waterworks fittings.  
Proven and time tested.  
Quality you can depend on.**

# COUPLINGS & ACCESSORIES

PRODUCT	PRODUCT NUMBER AND DESCRIPTION	APPLICATION	TYPE OF PIPE	FOR PIPE SIZES	WORKING PRESS. **
	Cast Couplings, Enamel Coated <b>1406</b> SS Fasteners <b>1408</b> HSLA Fasteners	Connections between pipes of same nominal size and same or different OD's.	Ductile Iron Cast Iron Steel A/C, PVC HDPE***	3" through 16" 18" through 24"	175 psi 150 psi
	Cast Couplings, Epoxy Coated <b>1506</b> SS Fasteners <b>1507</b> Epoxy Coated, HSLA Fasteners with Anodes	Connections between pipes of same nominal size and same or different OD's, but for areas where corrosion is a factor.	Ductile Iron Cast Iron Steel A/C, PVC HDPE***	3" through 16" 18" through 24"	175 psi 150 psi
	Cast Couplings, Epoxy Coated, Cathodically Fitted <b>1519</b> Epoxy Coated, HSLA Fasteners	Connections between pipes of same nominal size and same or different OD's. Cathodically fitted to allow for electrical continuity throughout the entire fitting.	Ductile Iron Cast Iron Steel A/C, PVC HDPE***	3" through 16" 18" through 24"	175 psi 150 psi
	Rapid-Fit Cast Couplings, Epoxy Coated <b>1706</b> SS Fasteners <b>1708</b> Dacromet Coated Fasteners	Connections between pipes of same nominal size and same or different OD's. Stab Fit.	Ductile Iron Cast Iron Steel A/C, PVC HDPE***	2" through 12"	150 psi
	Rapid-Fit Plus Cast Couplings, Epoxy Coated <b>1716</b> SS Fasteners <b>1718</b> Dacromet Fasteners	Connections between pipes of same nominal size and same or different OD's. Stab Fit.	Ductile Iron Cast Iron Steel A/C, PVC HDPE***	4" through 8"	150 psi
	Multi-Range, Cast Couplings, Epoxy Coated <b>1726</b> SS Fasteners <b>1728</b> HSLA Fasteners	Connections between pipes of same nominal size and same or different OD's. Stab Fit.	Ductile Iron Cast Iron Steel A/C, PVC HDPE***	4" through 12"	Up To 350 psi
	Multi-Range, Stainless Steel Coupling <b>1736AS</b> Stainless Steel	Connections between pipes of same nominal size and same or different OD's. Fabricated out of T-316 Stainless Steel. Stab Fit.	Ductile Iron Cast Iron Steel A/C, PVC HDPE***	4" through 12"	Up To 350 psi
	Cast Reducing Couplings, Enamel Coated <b>1406R</b> SS Fasteners <b>1408R</b> HSLA Fasteners	Connections between pipes of different nominal sizes.	Ductile Iron Cast Iron Steel A/C, PVC HDPE***	3" through 16" 18" through 24"	175 psi 150 psi
	Cast Reducing Couplings, Epoxy Coated <b>1506R</b> SS Fasteners <b>1507R</b> Epoxy Coated, HSLA Fasteners with Anodes	Connections between pipes of different nominal sizes, but for areas where corrosion is a factor.	Ductile Iron Cast Iron Steel A/C, PVC HDPE***	3" through 16" 18" through 24"	175 psi 150 psi

Note: \*\* Working pressure is dependent on pipe diameter, condition of pipe, service conditions and application.

\*\*\* Restraints and inserts are recommended when installing on HDPE.

**ROBAR INDUSTRIES LTD.**

Surrey, BC

Boucherville, QC

Tel: (604) 591-8811

Tel: (450) 641-9525

Website: [www.robarindustries.com](http://www.robarindustries.com)  
E-mail: [waterworks@robarindustries.com](mailto:waterworks@robarindustries.com)

Toll Free: (800) 663-6553








Toll Free: (800) 315-9525

Fax: (604) 591-5288

Fax: (450) 641-4894



# COUPLINGS & ACCESSORIES

PRODUCT	PRODUCT NUMBER AND DESCRIPTION	APPLICATION	TYPE OF PIPE	FOR PIPE SIZES	WORKING PRESS. **
	Cast Reducing Couplings, Epoxy Coated, Cathodically Fitted <b>1519R</b> HSLA Fasteners, Epoxy Coated	Connections between two pipes of different nominal sizes. Cathodically fitted to allow for electrical continuity throughout the entire fitting.	Ductile Iron Cast Iron Steel A/C, PVC HDPE***	3" through 16" 18" through 24"	175 psi 150 psi
	<b>1180</b> Isolation Boots	Used to separate pipe ends in cathodically protected systems.	All types	4" through 12" 18" through 24"	175 psi 150 psi
	<b>1606</b> Stainless Steel Couplings	Connections between pipes of the same OD.	All types	4" through 12" *	150 psi
	EBAA Cast Restraint Coupling Series <b>3800 Series</b>	Restrained coupling for use in joining two plain end pipes of the same or dissimilar OD's. Provides axial restraint with a safety factor of 2 to 1.	Ductile Iron Steel PVC	4" through 12"	250 psi
	Fabricated Steel Couplings <b>1806</b> SS Fasteners <b>1808</b> HSLA Fasteners <b>1906</b> SS Fasteners, Epoxy Coated	Used to couple with some flexibility larger diameter Steel and Cast Iron pipe lines.	Ductile Iron Cast Iron Steel A/C, PVC HDPE*** Concrete	4" through 96" *	Up To 1500 psi
	Fabricated Steel Reducing Couplings <b>1846</b> SS Fasteners <b>1848</b> HSLA Fasteners <b>1946</b> SS Fasteners, Epoxy Coated	Used to couple with some flexibility larger diameter Steel and Cast Iron pipe lines, but for coupling pipes of different nominal sizes.	Ductile Iron Cast Iron Steel A/C, PVC HDPE*** Concrete	Large end: 6" through 48" Small end: 4" through 46" *	Up To 1500 psi
	Fabricated Steel Long Barrel Couplings <b>1856</b> SS Fasteners <b>1858</b> HSLA Fasteners <b>1956</b> SS Fasteners, Epoxy Coated	Used to couple with some flexibility larger diameter Steel and Cast Iron pipe lines. Used to couple large pipe gaps.	Ductile Iron Cast Iron Steel A/C, PVC HDPE*** Concrete	4" through 96" *	Up To 1500 psi

Note: \* Larger sizes are available upon request.

\*\* Working pressure is dependent on pipe diameter, condition of pipe, service conditions and application.

\*\*\* Restraints and inserts are recommended when installing on HDPE.

**ROBAR INDUSTRIES LTD.**

Surrey, BC

Boucherville, QC

Tel: (604) 591-8811

Tel: (450) 641-9525

Website: [www.robarindustries.com](http://www.robarindustries.com)  
E-mail: [waterworks@robarindustries.com](mailto:waterworks@robarindustries.com)

Toll Free: (800) 663-6553  
Fax: (604) 591-5288

Toll Free: (800) 315-9525  
Fax: (450) 641-4894



# SERVICE SADDLES

PRODUCT	PRODUCT NUMBER AND DESCRIPTION	APPLICATION	TYPE OF PIPE	FOR PIPE SIZES	WORKING PRESS. **
	Cast Ductile Service Saddles <b>2408</b> Enamel Coated with Low Alloy Steel Straps Zinc Plated	Used to take a service outlet off a transmission or distribution line.	Ductile Iron Cast Iron Steel	4" through 12"	175 psi
	Cast Ductile Service Saddles <b>2406</b> Enamel Coated with Stainless Steel Straps	Used to take a service outlet off a transmission or distribution line.	Ductile Iron Cast Iron Steel PVC	2" through 12"	175 psi
	Cast Ductile Service Saddles <b>2506</b> Epoxy Coated with Stainless Steel Straps	Used to take a service outlet off a transmission or distribution line in a corrosive area.	Ductile Iron Cast Iron Steel PVC	2" through 12"	175 psi
	Stainless Steel Service Saddles <b>2616</b> One Closure	Used to take a service outlet off a transmission or distribution line.  Recommended for plastic pipe or where corrosion is a factor.	Ductile Iron Cast Iron Steel A/C, PVC HDPE	2" through 12"	150 psi
	Stainless Steel Service Saddles <b>2626</b> Two Closures	Used to take a service outlet off a transmission or distribution line.  Recommended for plastic pipe or where corrosion is a factor.	Ductile Iron Cast Iron Steel A/C, PVC HDPE	3" through 18"	150 psi
	Stainless Steel Service Saddles <b>2636</b> Three Closures	Used to take a service outlet off a transmission or distribution line.  Recommended for plastic pipe or where corrosion is a factor.	Ductile Iron Cast Iron Steel A/C, PVC HDPE	16" through 24" *	150 psi
	Cast Bronze Service Saddles <b>2706</b> Cast Bronze body with Stainless Steel Straps	Used to take a service outlet off a transmission or distribution line, where corrosion is a factor.	Ductile Iron Cast Iron Steel A/C, PVC Dry Tap on HDPE	4" through 24"	150 psi
	<b>2786</b> Isolating Saddles	Used to electrically isolate an outlet or service line.	Ductile Iron Cast Iron Steel	6" through 16"	150 psi
	Sewer Saddles <b>3606</b> No Fasteners <b>3626</b> Outlet opposite closure <b>3696</b> Outlet at 90° to closure	Used to make a 4" inlet branch to a gravity main sewer line.	PVC-SDR 35 HDPE	6" through 18" *	Gravity

Note: \* Larger sizes are available upon request.

\*\* Working pressure is dependent on pipe diameter, condition of pipe, service conditions and application.

**ROBAR INDUSTRIES LTD.**

Surrey, BC

Boucherville, QC

Tel: (604) 591-8811

Tel: (450) 641-9525





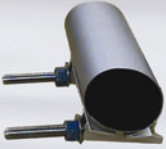
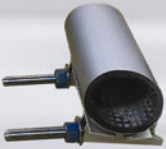
Website: [www.robarindustries.com](http://www.robarindustries.com)  
E-mail: [waterworks@robarindustries.com](mailto:waterworks@robarindustries.com)

Toll Free: (800) 663-6553  
Fax: (604) 591-5288

Toll Free: (800) 315-9525  
Fax: (450) 641-4894



# REPAIR CLAMPS

PRODUCT	PRODUCT NUMBER AND DESCRIPTION	APPLICATION	TYPE OF PIPE	FOR PIPE SIZES	WORKING PRESS. **
	<b>4499</b> Restraint Lugs	Used on mechanical joint fittings to prevent pull out.	Ductile Iron Cast Iron	All	N/A
	Stainless Steel Repair Clamps <b>5616</b> One Closure	Used to effectively repair holes and breaks in water mains.  A wide range of designs, lengths, or diameters are available.  3/4" - 2" IP or CC Outlets are available on all repair clamps.	Ductile Iron Cast Iron Steel A/C, PVC HDPE	3" through 12"	150 psi
	Stainless Steel Repair Clamps <b>5626</b> Two Closures			3" through 16"	150 psi
	Stainless Steel Repair Clamps <b>5636</b> Three Closures			12" through 24" *	150 psi
	Stainless Steel Repair Clamps <b>5696</b> Partial Wrap Gasket	Used to repair small punctures, pinholes and splits requiring only a partial wrap gasket.	Ductile Iron Cast Iron Steel A/C, PVC HDPE	2" through 8"	150 psi
	Stainless Steel Repair Clamps <b>5606</b> One Closure	Used to repair small holes or breaks in water mains.	Ductile Iron Cast Iron Steel A/C, PVC HDPE	2" through 8"	150 psi

Note: \* Larger sizes are available upon request.

\*\* Working pressure is dependent on pipe diameter, condition of pipe, service conditions and application.

**ROBAR INDUSTRIES LTD.**

Surrey, BC

Boucherville, QC

Tel: (604) 591-8811

Tel: (450) 641-9525

Website: [www.robarindustries.com](http://www.robarindustries.com)  
E-mail: [waterworks@robarindustries.com](mailto:waterworks@robarindustries.com)

Toll Free: (800) 663-6553  
Fax: (604) 591-5288

Toll Free: (800) 315-9525  
Fax: (450) 641-4894



# SLEEVES, FCA'S & EXPANSION JOINTS

PRODUCT	PRODUCT NUMBER AND DESCRIPTION	APPLICATION	TYPE OF PIPE	FOR PIPE SIZES	WORKING PRESS. **
	Cast Tapping Sleeves <b>6404</b> Enamel Coated, HSLA Fasteners <b>6506</b> Epoxy Coated, Stainless Steel Fasteners	Used to make a flanged outlet off a main supply line.	Ductile Iron Cast Iron	4" through 8"	150 psi
	<b>6606</b> Stainless Steel Tapping Sleeves	Used for "Wet" or "Hot" applications.	Ductile Iron Cast Iron Steel A/C, PVC	4" through 24" *	150 psi
	<b>6626</b> Stainless Steel Outlet Sleeves	Used for "Dry Tap" applications. Particularly suited for use on HDPE.	Ductile Iron Cast Iron Steel A/C, PVC HDPE	4" through 24" *	150 psi
	Mining Outlet Sleeve <b>6676</b> Stainless Steel	Same as a 6606 but has no test plug. Has a full wrap around gasket. For mine tailings distribution.	Steel HDPE	4" through 24" *	150 psi
	Fabricated Mild Steel Tapping Sleeves <b>6808</b> Enamel Coated, HSLA Fasteners <b>6906</b> Epoxy Coated, SS Fasteners	Used to make a flanged outlet off a main supply line.	Ductile Iron Cast Iron Steel A/C	8" through 24"	150 psi
	Fabricated Mild Steel Tapping Sleeves <b>6828</b> Enamel Coated, HSLA Fasteners <b>6926</b> Epoxy Coated, SS Fasteners	Used to make a flanged outlet off a main supply line.	Ductile Iron Cast Iron Steel A/C	4" through 48" *	150 psi
	Flanged Coupling Adapters Cast Iron <b>7404</b> Enamel Coated, HSLA Fasteners <b>7406</b> Enamel Coated, SS Fasteners <b>7506</b> Epoxy Coated, SS Fasteners	Used to flexibly adapt plain end pipe to flanged end.	Ductile Iron Cast Iron Steel A/C, PVC HDPE	4" through 12"	150 psi
	Fabricated Mild Steel Flanged Coupling Adapters <b>7808</b> Enamel Coated, HSLA Fasteners <b>7906</b> Epoxy Coated, SS Fasteners	Used to flexibly adapt plain end pipe to flange end.	Ductile Iron Cast Iron Steel A/C, PVC HDPE	4" through 96" *	Up To 300 psi
	<b>8808</b> Fabricated Mild Steel Expansion Joints	Used in pipelines where large longitudinal pipe movements are concentrated.	Steel	3" through 96" *	Up To 500 psi

Note: \* Larger sizes are available upon request.

\*\* Working pressure is dependent on pipe diameter, condition of pipe, service conditions and application.

**ROBAR INDUSTRIES LTD.**

Surrey, BC

Boucherville, QC

Tel: (604) 591-8811

Tel: (450) 641-9525



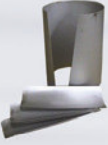


Website: [www.robarindustries.com](http://www.robarindustries.com)  
E-mail: [waterworks@robarindustries.com](mailto:waterworks@robarindustries.com)

Toll Free: (800) 663-6553  
Fax: (604) 591-5288

Toll Free: (800) 315-9525  
Fax: (450) 641-4894



# MISCELLANEOUS

PRODUCT	PRODUCT NUMBER AND DESCRIPTION	APPLICATION	TYPE OF PIPE	FOR PIPE SIZES	WORKING PRESS. **
	Drilling Machine <b>9010</b>	Used for drilling taps in mains. Available from 3/4" - 2".	Ductile Iron Cast Iron Steel A/C, PVC HDPE	All	N/A
	Meter Couplings <b>9440</b> Cast Ductile Iron <b>9470</b> Cast Waterworks Bronze	Used for tapping to NPT standards to mate with flanged water meters.	N/A	1 1/2" 2"	150 psi 150 psi
	Adjustable Inserts <b>9626</b> Stainless Steel	Used to add hoop strength on thin wall PVC or HDPE pipe when using couplings, repair clamps or restraining devices.	HDPE	6" through 24" *	N/A
	Slikstyx Lubricant <b>Deluxe</b> - Non-Flammable <b>Regular</b> - Flammable	Used on gasket applications for easier installation.	Use on any gasketed water and sanitary pipes	All	N/A
	Recreational Horseshoes <b>9999</b>	Used to relieve business tension on weekends.	N/A	N/A	N/A

Note: \* Larger sizes are available upon request.  
 \*\* Working pressure is dependent on pipe diameter, condition of pipe, service conditions and application.

**ROBAR INDUSTRIES LTD.**

Surrey, BC

Boucherville, QC

Tel: (604) 591-8811

Tel: (450) 641-9525

Website: [www.robarindustries.com](http://www.robarindustries.com)  
 E-mail: [waterworks@robarindustries.com](mailto:waterworks@robarindustries.com)

Toll Free: (800) 663-6553  
 Fax: (604) 591-5288

Toll Free: (800) 315-9525  
 Fax: (450) 641-4894





**ROBAR INDUSTRIES LTD.**  
**Waterworks Division**

**Surrey Location**

12945 78th Avenue  
Surrey, BC, Canada  
V3W 2X8

Phone: (604) 591-8811 or 1-800-663-6553  
Fax: (604) 591-5288 or 1-800-565-6685

**Boucherville Location**

1460 Joliot Curie  
Boucherville, QC, Canada  
J4B 7L9

Phone: (450) 641-9525  
Canada Toll Free: 1-800-315-9525  
Fax: (450) 641-4894

Website: [www.robarindustries.com](http://www.robarindustries.com)  
E-mail: [waterworks@robarindustries.com](mailto:waterworks@robarindustries.com)

**A fully integrated foundry and manufacturing facility.  
Designing, Engineering and Manufacturing.**